



TÉCNICO LISBOA

Conference IGEAT  
Combining Scientific Expertise With  
Participation: The Challenge Of The  
European Landscape Convention

# The European Landscape Convention at urban scale: insights from a methodological approach in Lisbon

Isabel Loupa Ramos & Ricardo Silva

Research Group on Urban Planning and Environment, University of Lisbon | cesur@tecnico.ulisboa.pt

## What about the European Landscape Convention?

Landscape means an **area**, as perceived by **people**, whose **character** is the result of the **action** and **interaction** of natural and/or human factors

The Convention applies to **all** parts of Europe, including **natural, rural, urban** and **peri-urban** areas.

It is not confined to either the **cultural, man-made** or **natural components** of landscape: it is concerned with **all** of these and how they **interconnect**.

Depending on the definition of landscape  
Depending on the language  
A **scenery** or a **territory**?

Not RURAL or natural

RURAL and URBAN are becoming blurred - conceptually and geographically  
RURAL/URBAN dichotomy still present in policy and planning  
URBAN is geographically better defined

In landscape literature  
Landscape is the **natural space** of the an urban area  
In urban studies literature  
Landscape is the **public space** component of the an urban area

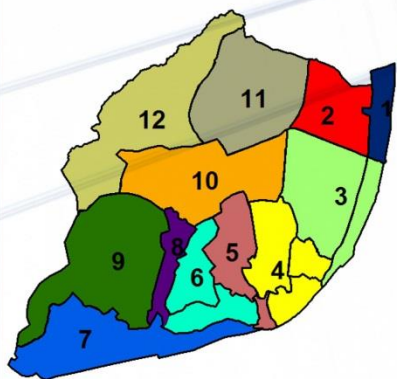
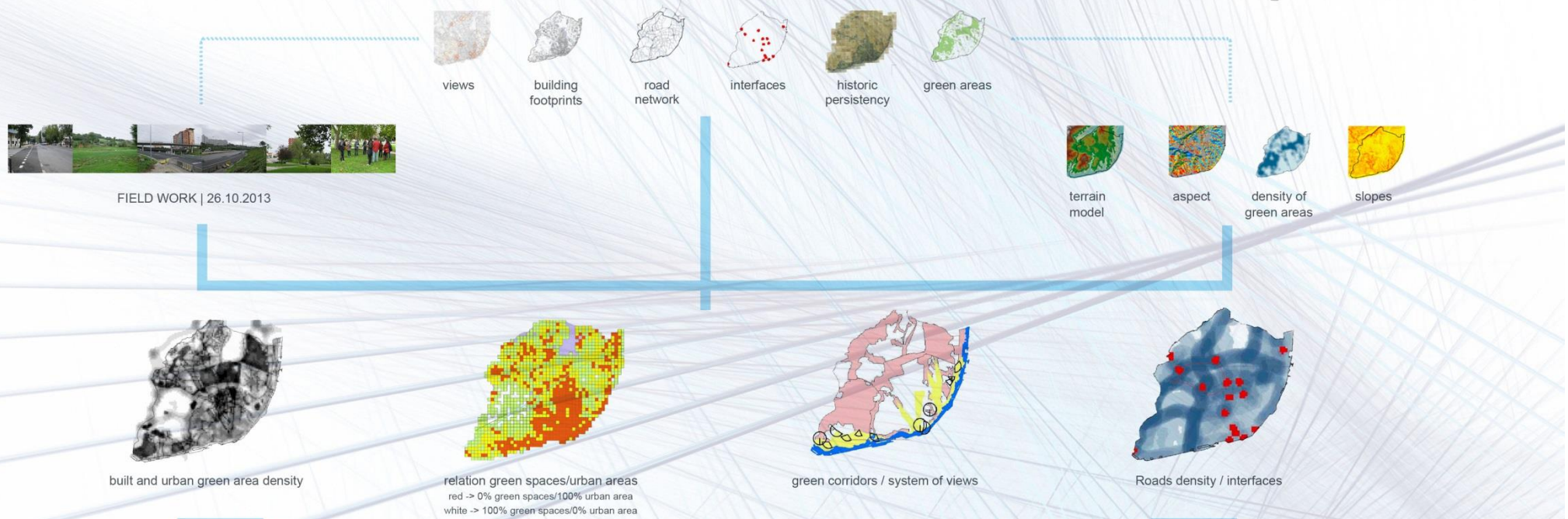
## What about the methodology?

Scope: Master Degree (MSc) in Urban Studies and Territorial Management

University of Lisbon, Portugal (<https://fenix.tecnico.ulisboa.pt/cursos/muot>)

Objectives: Definition of Landscape Character Areas in the city of Lisbon

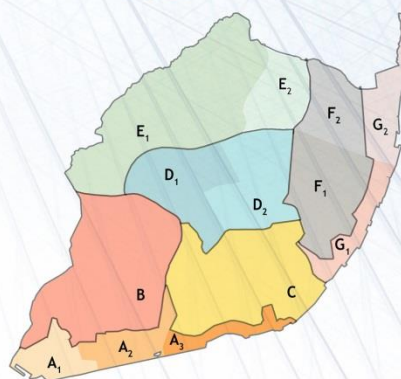
Methodology: ECOVAST methodology + GIS environment ----> 5 groups of students



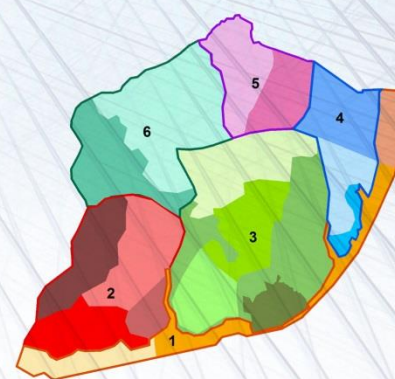
Team A - Urban/Green areas densities  
- Roads as limits of landscape units



Team B - Relation green spaces/Urban area  
- Views and green corridors



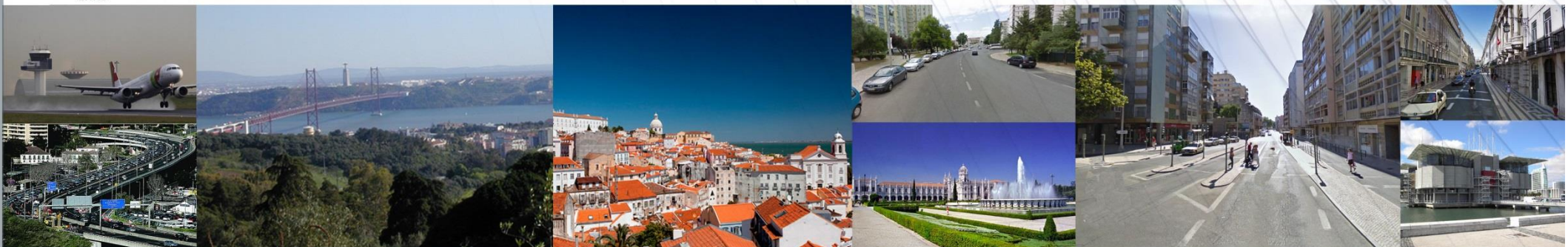
Team C - Building footprint/Green areas  
- Urban area density



Team D - Views  
- Archeological places



Team E - Historic persistency  
- Roads densities / interfaces



Isabel Loupa Ramos - [isabel.ramos@tecnico.ulisboa.pt](mailto:isabel.ramos@tecnico.ulisboa.pt)  
Ricardo Silva - [ricardojtsilva@tecnico.ulisboa.pt](mailto:ricardojtsilva@tecnico.ulisboa.pt)



### Acknowledgements

Team A - David Asanidze, Tiago Guerreiro & André Pereira  
Team C - Adilson Aires, Rogério Madeira & Ruben Henriques  
Team E - Ana Tarrafa, Catarina Faria & Denis Andrade

Team B - Fístão João, José Serrão & Mariano Gomes  
Team D - Margarida Afonso, Diana Bica, Rita Rente & Pascoal Fortunato